

CD11c Antibody

Catalog No: #21491



Package Size: #21491-1 50ul #21491-2 100ul #21491-4 25ul

Overview

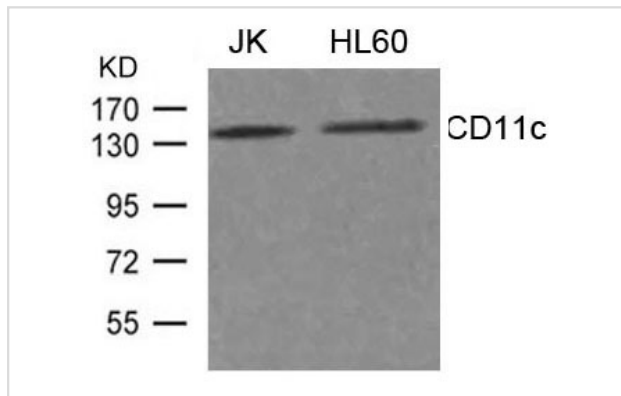
Product Name	CD11c Antibody
Host Species	Rabbit
Clonality	Polyclonal
Applications	WB
Species Reactivity	Hu
Immunogen Type	Peptide-KLH
Target Name	CD11c
Alternative Names	SLEB6; ITGAX;

Application Details

Predicted MW: 145kd

Western blotting: 1:500~1:1000

Images



Western blot analysis of extract from JK, HL-60 cells using CD11c Antibody #21491

Descriptions

Immunogen	Peptide sequence around aa.1155~1159(Q-T-P-S-P)derived from Human CD11c.
Specificity	The antibody detects endogenous level of total CD11c protein.
Purification	Antibodies were produced by immunizing rabbits with synthetic peptide and KLH conjugates. Antibodies were purified by affinity-chromatography using epitope-specific peptide.
Formulation	Supplied at 1.0mg/mL in phosphate buffered saline (without Mg ²⁺ and Ca ²⁺), pH 7.4, 150mM NaCl, 0.02% sodium azide and 50% glycerol.
Storage	Store at -20°C for long term preservation (recommended). Store at 4°C for short term use.
Accession NO.	Swiss-Prot: P20702NCBI Protein: NP_000878.2

Related Information

Integrin α -X/ β -2 is a receptor for fibrinogen. It recognizes the sequence G-P-R in fibrinogen. It mediates cell-cell interaction during inflammatory responses. It is especially important in monocyte adhesion and chemotaxis.

Chen R., Jiang X., Sun D., Han G., Wang F., Ye M., Wang L., Zou H.J. Proteome Res. 8:651-661(2009)

Note: This product is for in vitro research use only and is not intended for use in humans or animals.