

Fibrillarin Antibody

Catalog No: #21495



Package Size: #21495-1 50ul #21495-2 100ul #21495-4 25ul

Overview

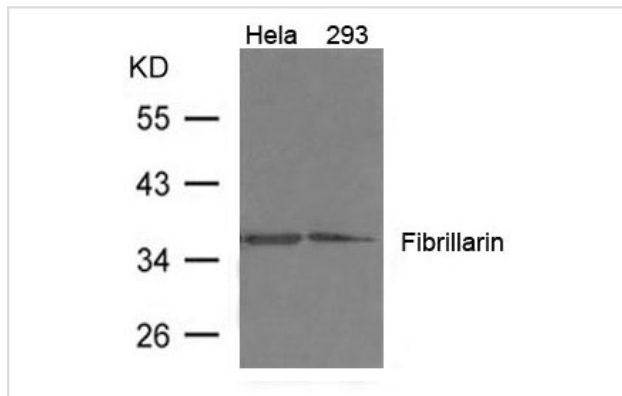
Product Name	Fibrillarin Antibody
Host Species	Rabbit
Clonality	Polyclonal
Applications	WB
Species Reactivity	Hu Ms Rt
Immunogen Type	Peptide-KLH
Target Name	Fibrillarin
Alternative Names	FBL; FIB; FLRN; RNU3IP1;

Application Details

Predicted MW: 37kd

Western blotting: 1:500~1:1000

Images



Western blot analysis of extract from 293, HeLa cells using Fibrillarin Antibody #21495

Descriptions

Immunogen	Peptide sequence around aa.297~301(L-T-L-E-P) derived from Human Fibrillarin
Specificity	The antibody detects endogenous level of total Fibrillarin protein.
Purification	Antibodies were produced by immunizing rabbits with synthetic peptide and KLH conjugates. Antibodies were purified by affinity-chromatography using epitope-specific peptide.
Formulation	Supplied at 1.0mg/mL in phosphate buffered saline (without Mg ²⁺ and Ca ²⁺), pH 7.4, 150mM NaCl, 0.02% sodium azide and 50% glycerol.
Storage	Store at -20°C for long term preservation (recommended). Store at 4°C for short term use.
Accession NO.	Swiss-Prot: P22087NCBI Protein: NP_001427.2

Related Information

Involved in pre-rRNA processing. Utilizes the methyl donor S-adenosyl-L-methionine to catalyze the site-specific 2'-hydroxyl methylation of ribose moieties in pre-ribosomal RNA. Site specificity is provided by a guide RNA that base pairs with the substrate. Methylation occurs at a characteristic distance from the sequence involved in base pairing with the guide RNA.

Lischwe M.A., Ochs R.L., Reddy R., Cook R.G., Yeoman L.C., Tan E.M., Reichlin M., Busch H. J. Biol. Chem. 260:14304-14310(1985)

Yanagida M., Hayano T., Yamauchi Y., Shinkawa T., Natsume T., Isobe T., Takahashi N.J. Biol. Chem. 279:1607-1614(2004)

Wang Y., Liu J., Zhao H., Lue W., Zhao J., Yang L., Li N., Du X., Ke Y. Biochim. Biophys. Acta 1773:863-868(2007)

Note: This product is for in vitro research use only and is not intended for use in humans or animals.