

## PLC-g2(Ab-1217) Antibody

Catalog No: #21524



Package Size: #21524-1 50ul #21524-2 100ul #21524-4 25ul

## Overview

Product Name	PLC-g2(Ab-1217) Antibody
Host Species	Rabbit
Clonality	Polyclonal
Applications	IHC IF
Species Reactivity	Hu Ms Rt
Immunogen Type	Peptide-KLH
Target Name	PLC-g2
Alternative Names	PLC-IV; PLC-gamma2; Phospholipase C-gamma-2

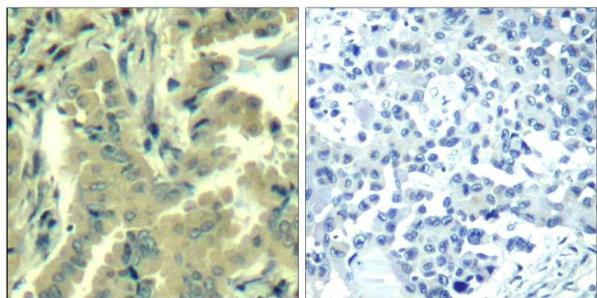
## Application Details

Predicted MW: 150kd

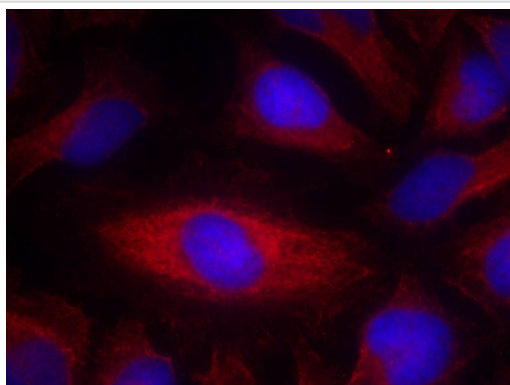
Immunohistochemistry: 1:50~1:100

Immunofluorescence: 1:100~1:200

## Images



Immunohistochemical analysis of paraffin-embedded human lung carcinoma tissue using PLC-g2(Ab-1217) Antibody #21524(left) or the same antibody preincubated with blocking peptide(right).



Immunofluorescence staining of methanol-fixed HeLa cells using PLC-g2(Ab-1217) Antibody #21524.

## Descriptions

Immunogen	Peptide sequence around aa.1215~1219 (F-L-Y-D-T) derived from Human PLCg2.
Specificity	The antibody detects endogenous level of total PLC-g2 protein.
Purification	Antibodies were produced by immunizing rabbits with synthetic peptide and KLH conjugates. Antibodies were purified by affinity-chromatography using epitope-specific peptide.
Formulation	Supplied at 1.0mg/mL in phosphate buffered saline (without Mg <sup>2+</sup> and Ca <sup>2+</sup> ), pH 7.4, 150mM NaCl, 0.02% sodium azide and 50% glycerol.
Storage	Store at -20°C for long term preservation (recommended). Store at 4°C for short term use.
Accession NO.	Swiss-Prot: P16885NCBI Protein: NP_002652.2

## Related Information

The production of the second messenger molecules diacylglycerol. (DAG) and inositol 1,4,5-trisphosphate (IP3) is mediated by activated phosphatidylinositol-specific phospholipase C enzymes. It is a crucial enzyme in transmembrane signaling.

Singer, W. D. et al. (1997) *Annu. Rev. Biochem.* 66, 475-509.

Smrcka, A. V. et al. (1991) *Science* 251, 804-807.

Yue, C. et al. (2000) *J. Biol. Chem.* 275, 30220-30225.

Watanabe, D. et al. (2001) *J. Biol. Chem.* 276, 38595-38601.

Note: This product is for in vitro research use only and is not intended for use in humans or animals.