

CK2a Antibody

Catalog No: #21572



Package Size: #21572-1 50ul #21572-2 100ul #21572-4 25ul

Overview

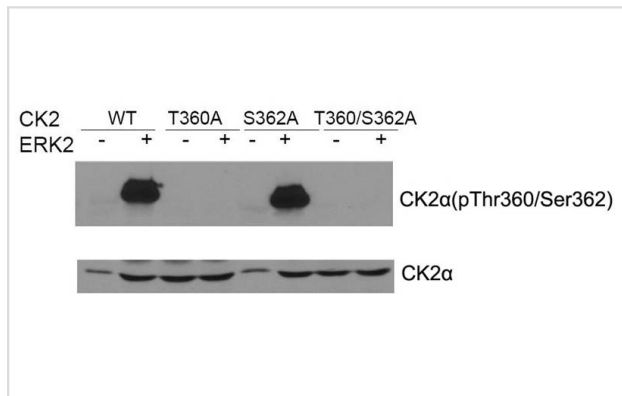
Product Name	CK2a Antibody
Host Species	Rabbit
Clonality	Polyclonal
Applications	WB
Species Reactivity	Hu Ms Rt
Immunogen Type	Peptide-KLH
Target Name	CK2a
Alternative Names	CKII; CK2A1; CSNK2A1

Application Details

Predicted MW: 42kd

Western blotting: 1:1000

Images



Western blot of CK2a(Phospho-Thr360/Ser362) antibody(#11572) and CK2aantibody(#21572) in vitro kinase assay. Both purified ERK2 and CK2 were used.

Descriptions

Immunogen	Peptide sequence around aa. 353~357 (C-S-G-I-S) derived from Human CK2a.
Specificity	The antibody detects endogenous levels of total CK2 protein.
Purification	Antibodies were produced by immunizing rabbits with synthetic peptide and KLH conjugates. Antibodies were purified by affinity-chromatography using epitope-specific peptide.
Formulation	Supplied at 1.0mg/mL in phosphate buffered saline (without Mg ²⁺ and Ca ²⁺), pH 7.4, 150mM NaCl, 0.02% sodium azide and 50% glycerol.
Storage	Store at -20°C for long term preservation (recommended). Store at 4°C for short term use.
Accession NO.	Swiss-Prot: P68400NCBI Protein: NP_001894.2

Related Information

Casein kinases are operationally defined by their preferential utilization of acidic proteins such as caseins as substrates. The α and α' chains contain the catalytic site. Participates in Wnt signaling. CK2 phosphorylates 'Ser-392' of p53/TP53 following UV irradiation.

Keller D.M., Zeng X., et al., Mol. Cell 7:283-292(2001)

Keller D.M., Lu H. et al., J. Biol. Chem. 277:50206-50213(2002)

Trembley J.H., Tatsumi S., et al., Mol. Cell. Biol. 25:1446-1457(2005)

Niefind K., Guerra B., et al., Acta Crystallogr. D 56:1680-1684(2000)

Note: This product is for in vitro research use only and is not intended for use in humans or animals.