

ERAB Antibody

Catalog No: #21602



Package Size: #21602-1 50ul #21602-2 100ul #21602-4 25ul

Overview

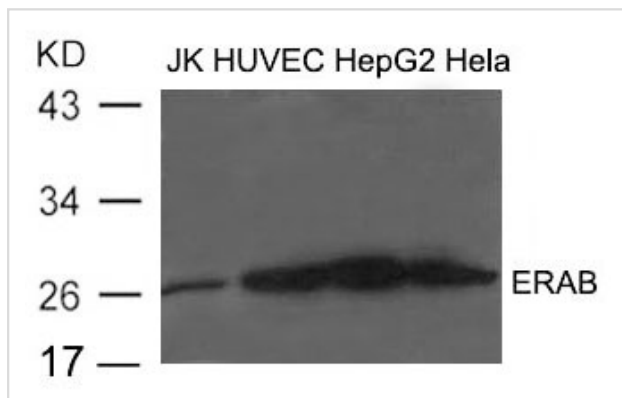
Product Name	ERAB Antibody
Host Species	Rabbit
Clonality	Polyclonal
Applications	WB
Species Reactivity	Hu Ms Rt
Immunogen Type	Peptide-KLH
Target Name	ERAB
Alternative Names	ABAD; CAMR; HCD2; MHBD; HADH2

Application Details

Predicted MW: 27kd

Western blotting: 1:500~1:1000

Images



Western blot analysis of extract from JK, HUVEC, HepG2 and HeLa cells using ERAB Antibody #21602

Descriptions

Immunogen	Peptide sequence around aa.253~257(L-D-G-A-I)derived from Human ERAB.
Specificity	The antibody detects endogenous level of total ERAB protein.
Purification	Antibodies were produced by immunizing rabbits with synthetic peptide and KLH conjugates. Antibodies were purified by affinity-chromatography using epitope-specific peptide.
Formulation	Supplied at 1.0mg/mL in phosphate buffered saline (without Mg ²⁺ and Ca ²⁺), pH 7.4, 150mM NaCl, 0.02% sodium azide and 50% glycerol.
Storage	Store at -20°C for long term preservation (recommended). Store at 4°C for short term use.
Accession NO.	Swiss-Prot: Q99714NCBI Protein: NP_004484.1

Related Information

Functions in mitochondrial tRNA maturation. Part of mitochondrial ribonuclease P, an enzyme composed of MRPP1/RG9MTD1, MRPP2/HSD17B10 and MRPP3/KIAA0391, which cleaves tRNA molecules in their 5'-ends. By interacting with intracellular amyloid-beta, it may contribute to the neuronal dysfunction associated with Alzheimer disease (AD).

Holzmann J., Frank P., Loeffler E., Bennett K.L., Gerner C., Rossmannith W. Cell 135:462-474(2008)

Note: This product is for in vitro research use only and is not intended for use in humans or animals.