

FOXP2 Antibody

Catalog No: #21608



Package Size: #21608-1 50ul #21608-2 100ul #21608-4 25ul

Overview

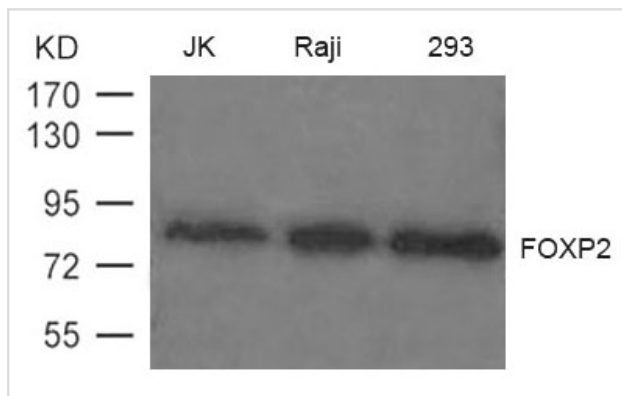
Product Name	FOXP2 Antibody
Host Species	Rabbit
Clonality	Polyclonal
Applications	WB
Species Reactivity	Hu Ms
Immunogen Type	Peptide-KLH
Target Name	FOXP2
Alternative Names	SPCH1; CAGH44; TNRC10

Application Details

Predicted MW: 85kd

Western blotting: 1:500~1:1000

Images



Western blot analysis of extract from JK, Raji and 293 cells using FOXP2 Antibody #21608

Descriptions

Immunogen	Peptide sequence around aa.707~711(E-E-P-L-S) derived from Human FOXP2.
Specificity	The antibody detects endogenous level of total FOXP2 protein.
Purification	Antibodies were produced by immunizing rabbits with synthetic peptide and KLH conjugates. Antibodies were purified by affinity-chromatography using epitope-specific peptide.
Formulation	Supplied at 1.0mg/mL in phosphate buffered saline (without Mg ²⁺ and Ca ²⁺), pH 7.4, 150mM NaCl, 0.02% sodium azide and 50% glycerol.
Storage	Store at -20°C for long term preservation (recommended). Store at 4°C for short term use.
Accession NO.	Swiss-Prot: O15409NCBI Protein: NP_055306.1

Related Information

Transcriptional repressor that may play a role in the specification and differentiation of lung epithelium. May also play a role in developing neural, gastrointestinal and cardiovascular tissues. Can act with CTBP1 to synergistically repress transcription but CTPBP1 is not essential. Involved in neural mechanisms mediating the development of speech and language.

Bruce H.A., Margolis R.L. Hum. Genet. 111:136-144(2002) Teramitsu I., Kudo L.C., London S.E., Geschwind D.H., White S.A.J. Neurosci. 24:3152-3163(2004)

Note: This product is for in vitro research use only and is not intended for use in humans or animals.